



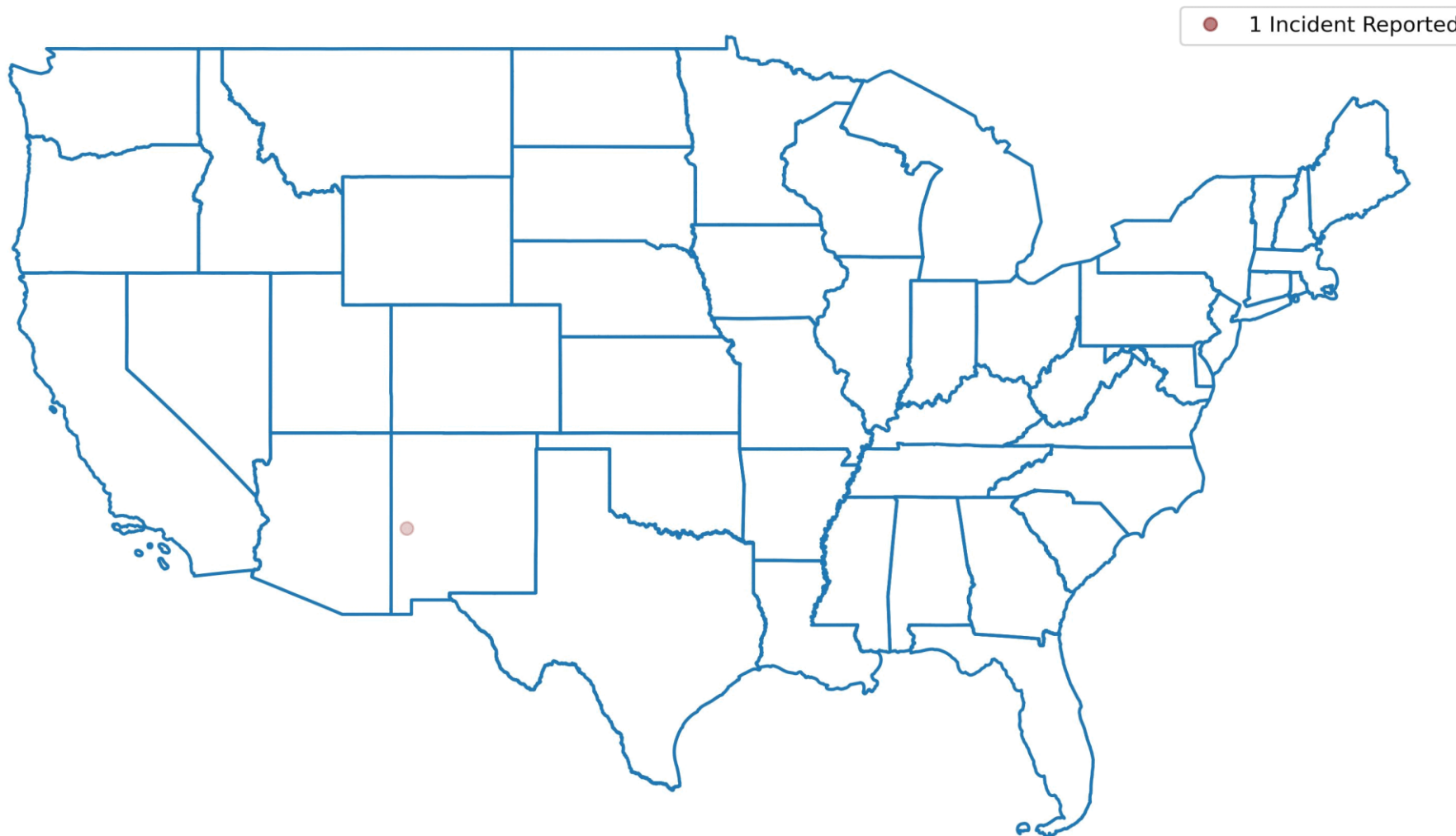
Wildfire Data Science Challenge

Christopher Abib
(Team: I'll Figure It Out Later)



Visualizing Historic Data

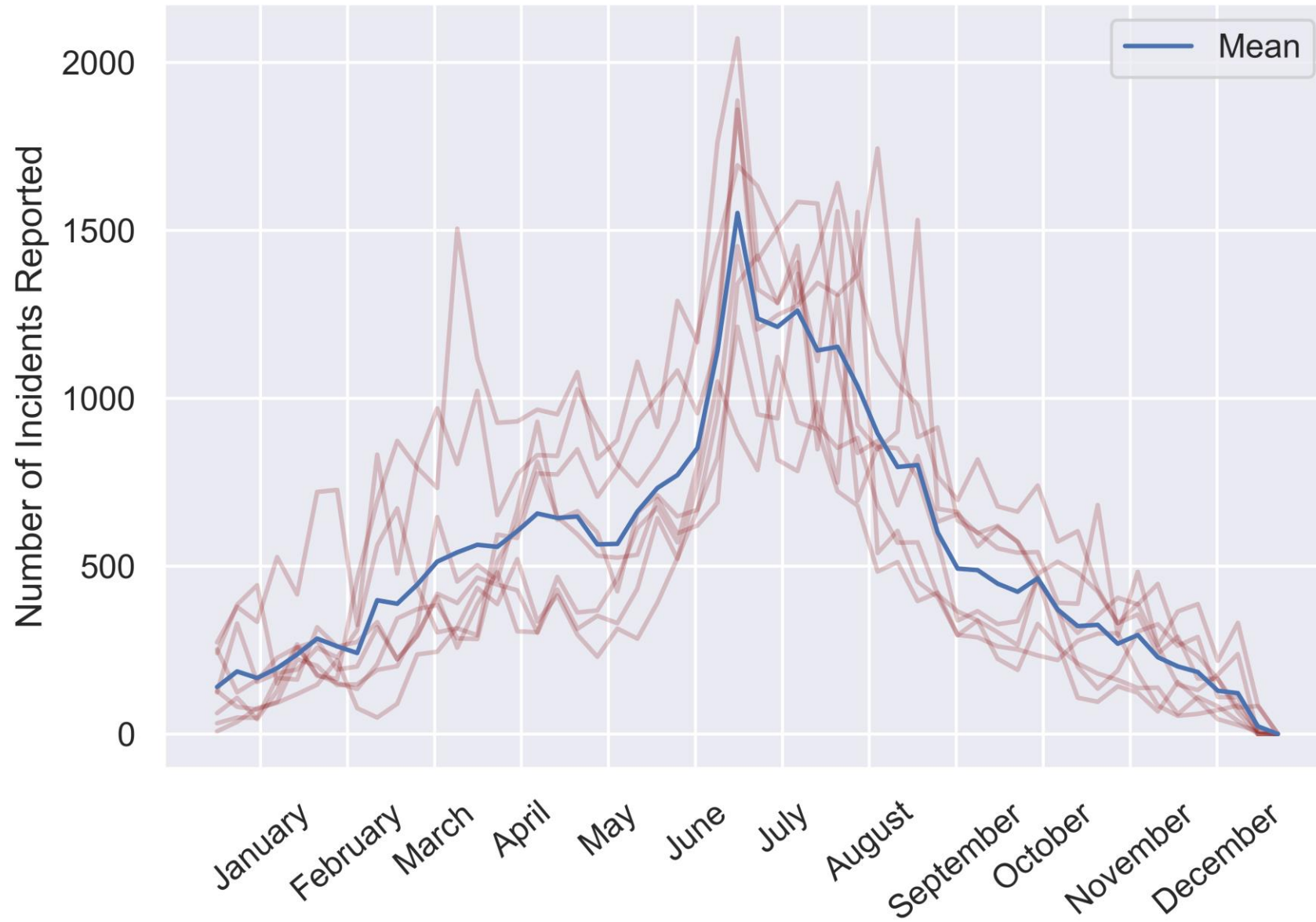
Wildfire Incidents Reported (Monthly)



January 2014

Source: National Interagency Fire Center

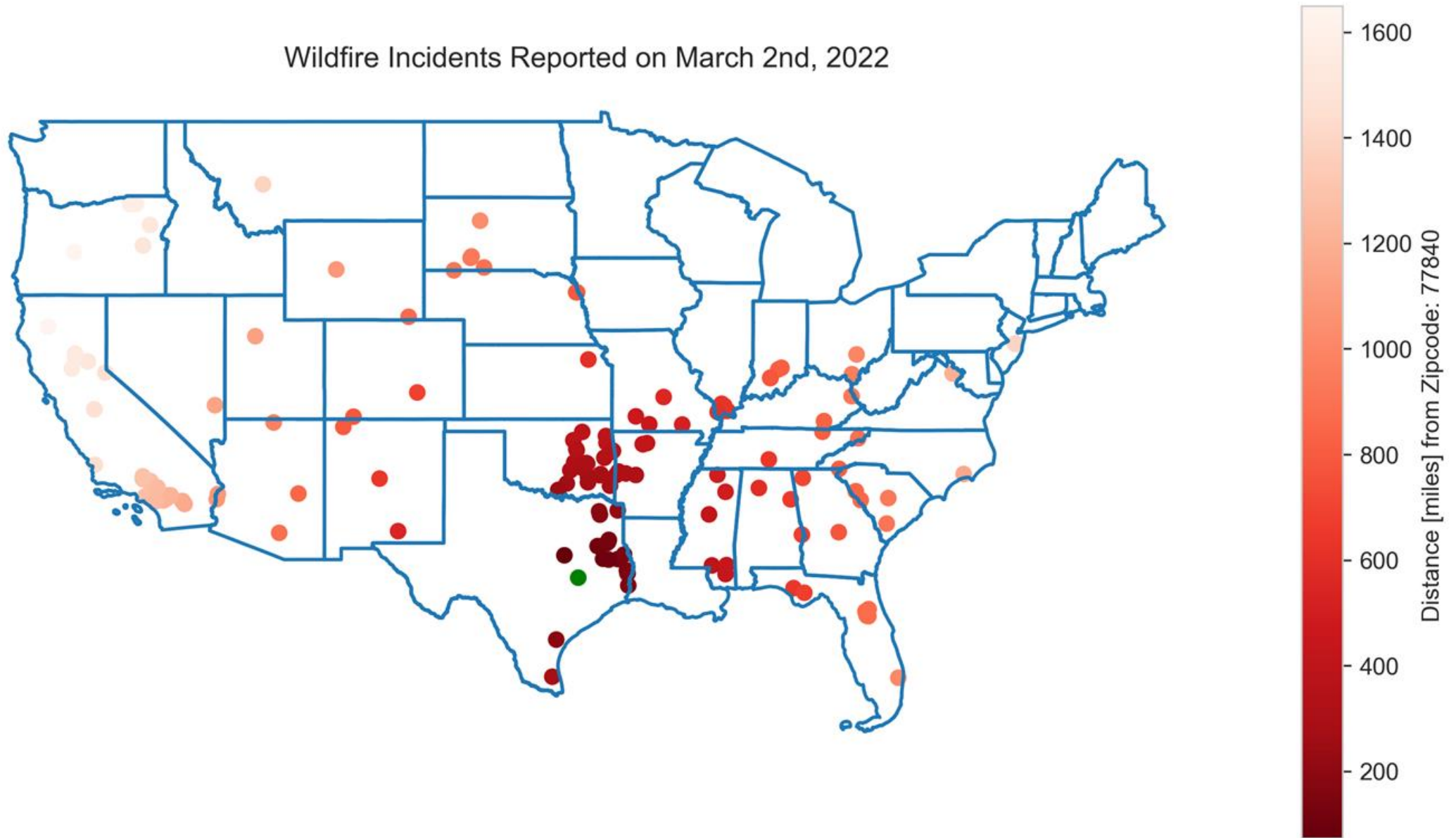
Wildfire Incidents Reported (2015-2022)





Leveraging Social Media

Wildfire Incidents Reported on March 2nd, 2022



Haversine Formula



φ = latitude
 λ = longitude
 $r = 3956$ [mi]

$$\text{hav}(\theta) = \sin^2\left(\frac{\varphi_2 - \varphi_1}{2}\right) + \cos(\varphi_1) \cdot \cos(\varphi_2) \cdot \sin^2\left(\frac{\lambda_2 - \lambda_1}{2}\right)$$

$$d = 2r \arcsin(\text{hav}(\theta))$$

```
def get_wildfire_update(zipcode: int, distance_range: float=100, days_ago: int = 0) -> str:
    ...
    return "On Date [date]:"
        "There are [quantity] reported wildfires within [#] miles of zipcode [#]."
        "The closest reported wildfire is [#] miles [distance]."
```

```
client.create_tweet(text=get_wildfire_update(zipcode: 77840, distance_range=100, days_ago=364))
```


Twitter Frontend



TEXAS A&M
UNIVERSITY



Abib Wildfire Resource Center

@AbibWildfires · [Follow](#)



On April 11, 2022:

There are 2 reported wildfires within 100 miles of zipcode 77840.

The closest reported wildfire is 72.42 miles northeast.

2:01 AM · Apr 12, 2023



Reply



Share

[Read more on Twitter](#)



Thank you for the opportunity!